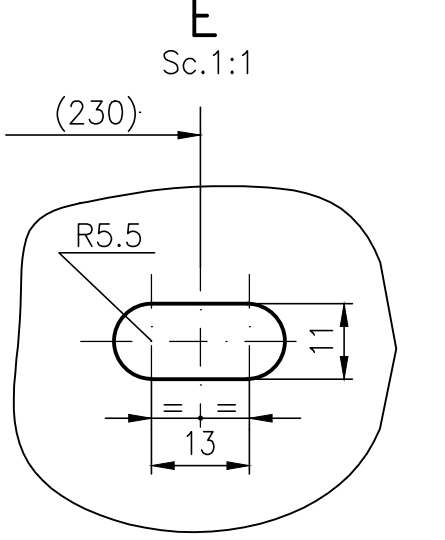
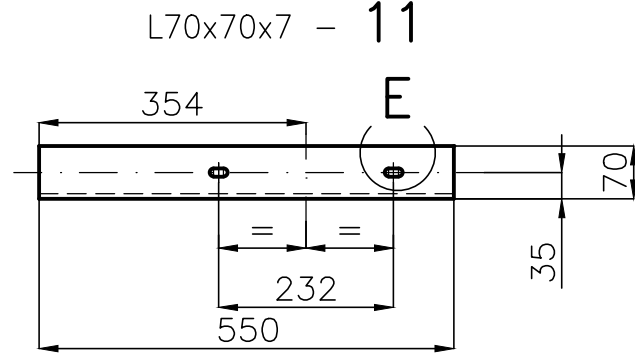
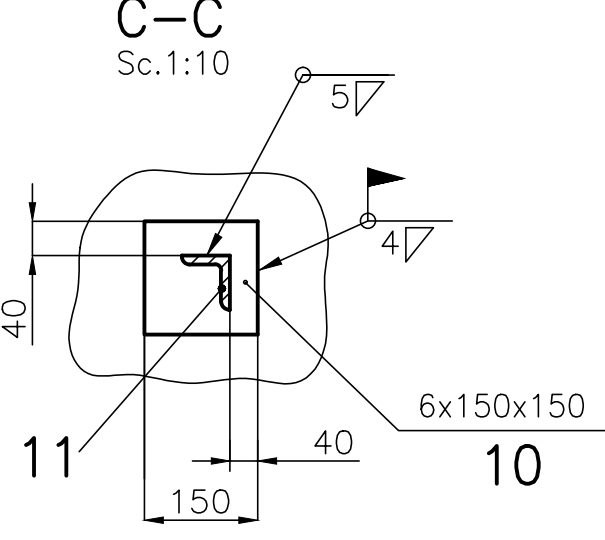
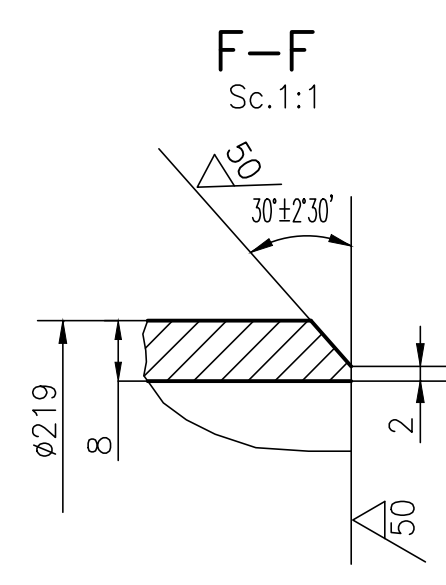
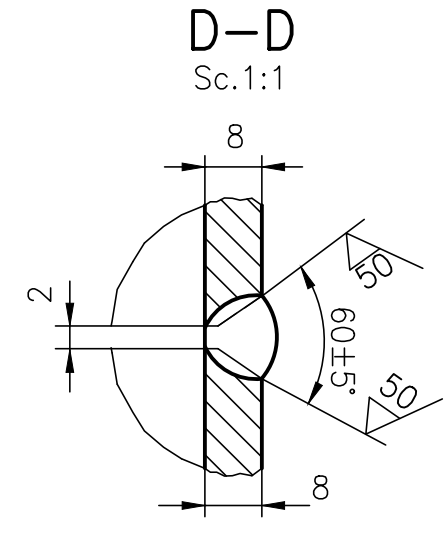
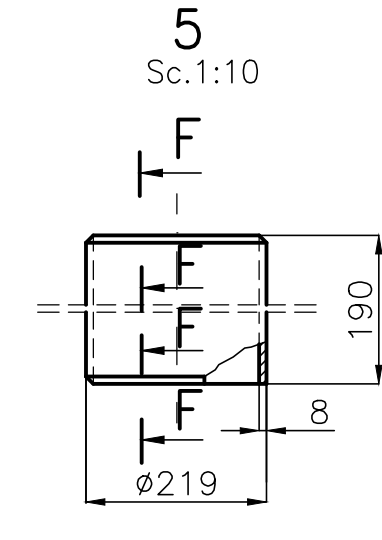
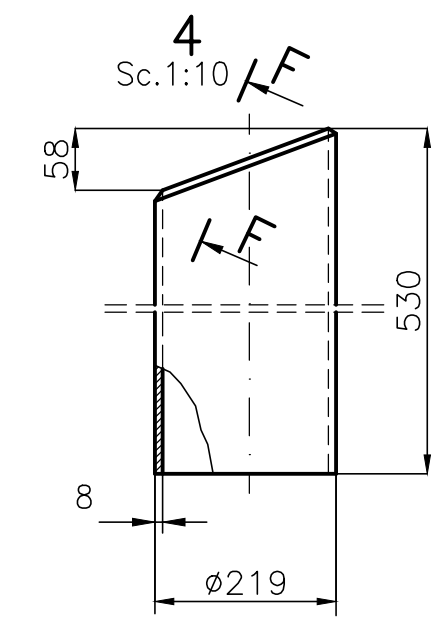
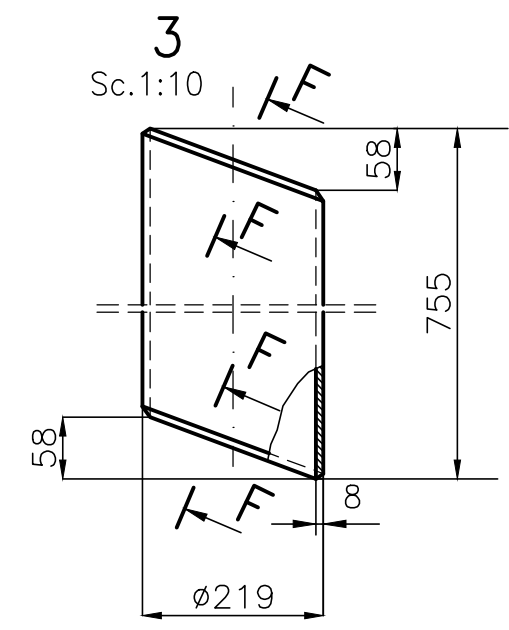
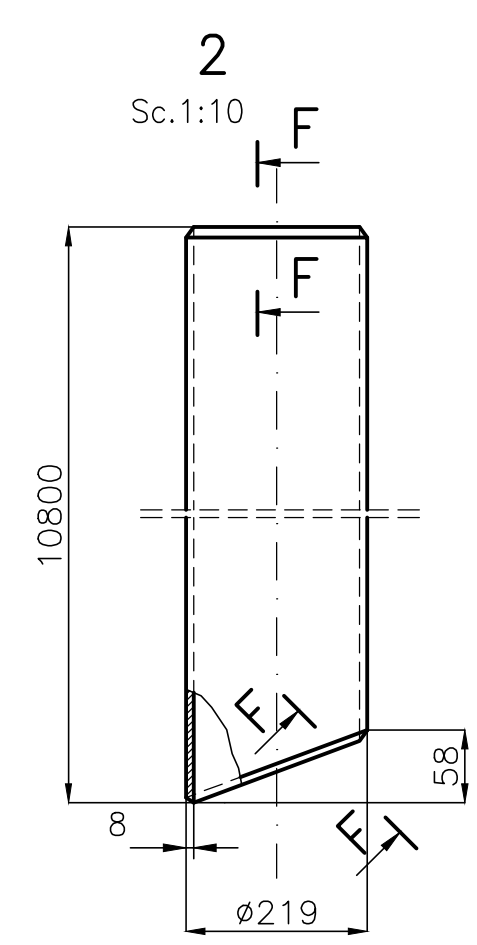
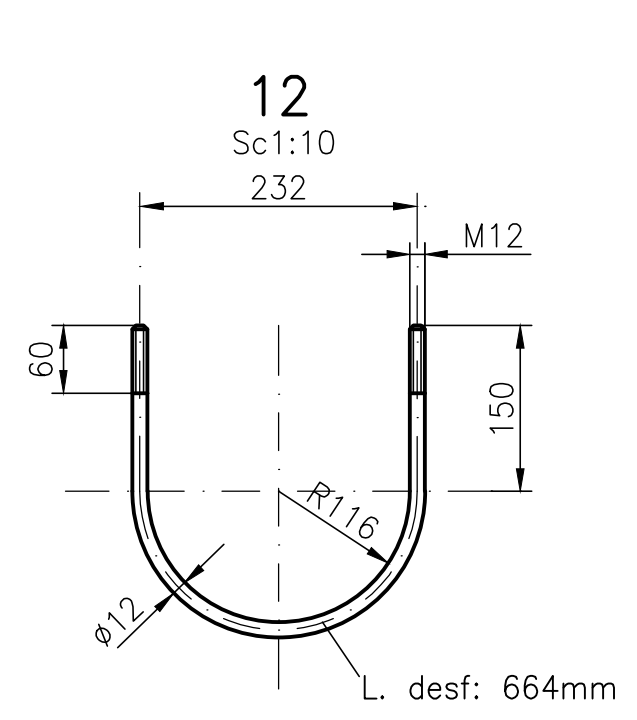
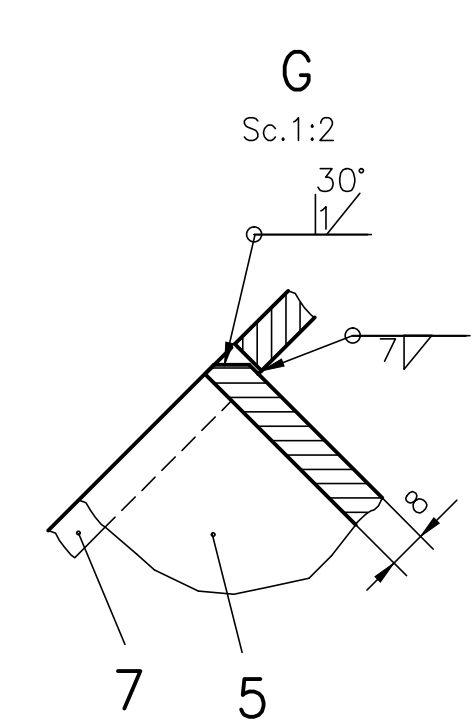
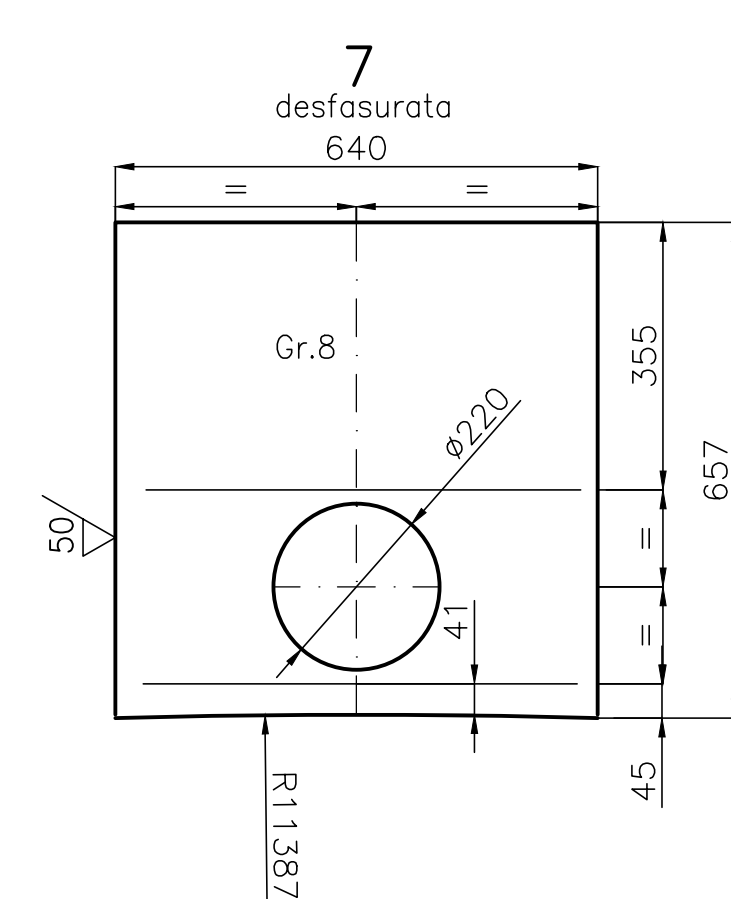
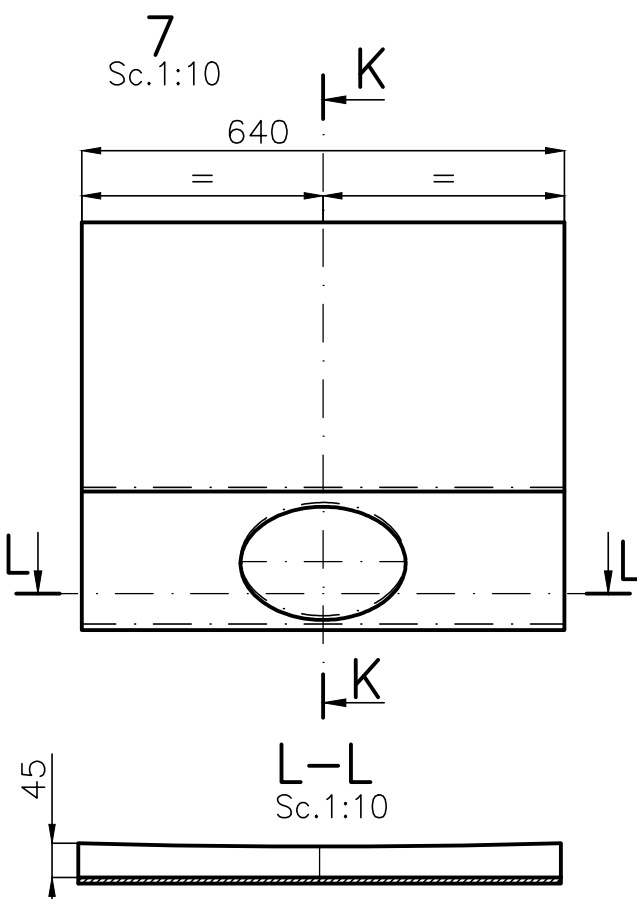
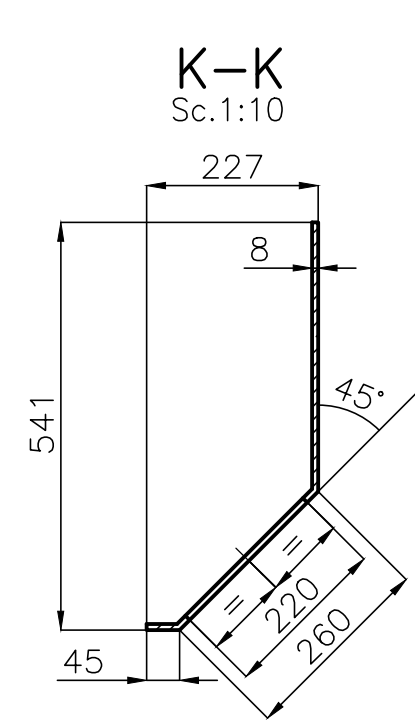
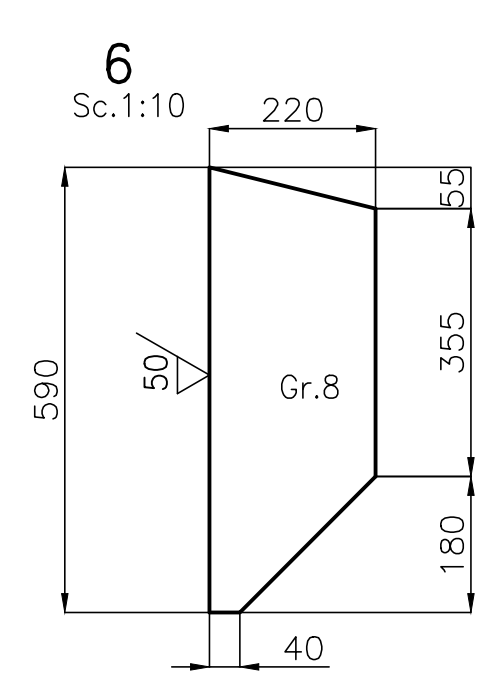
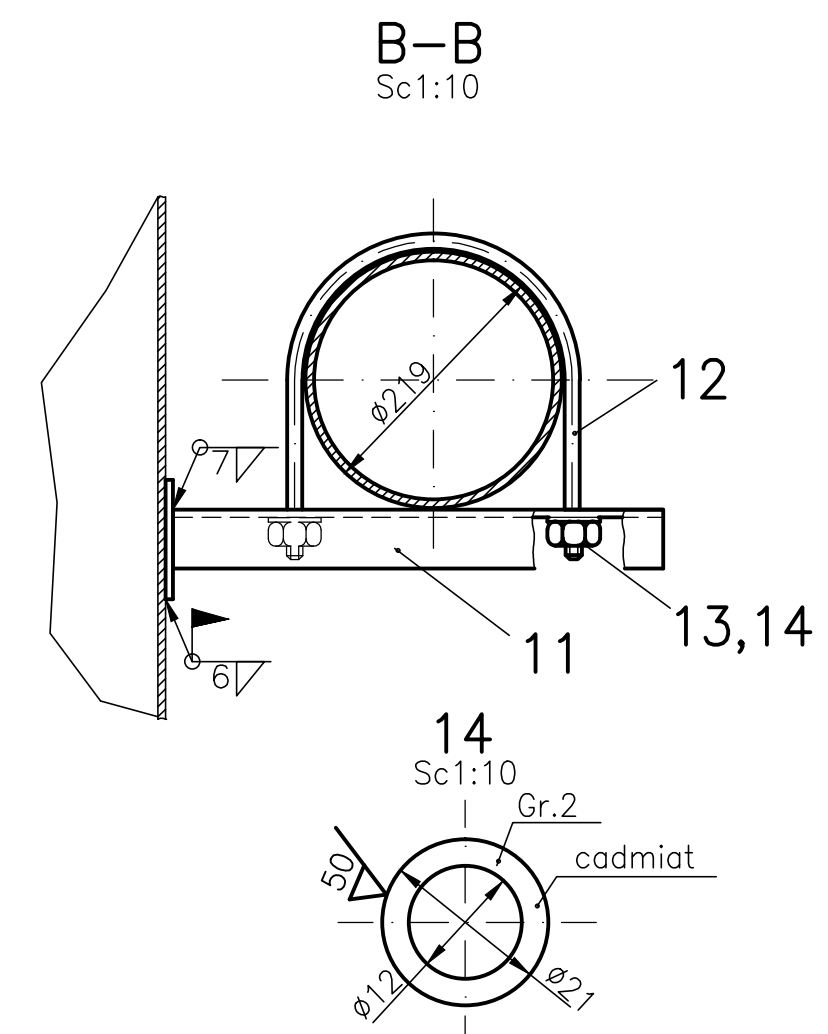
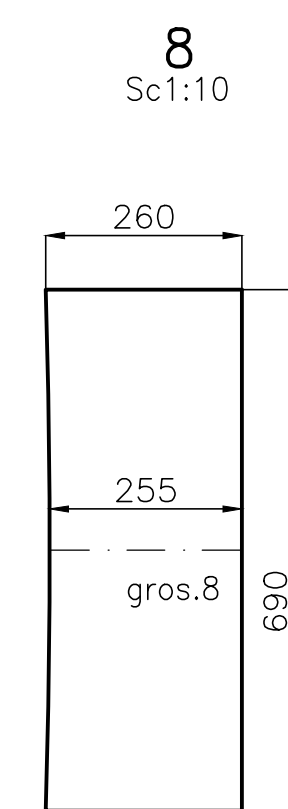
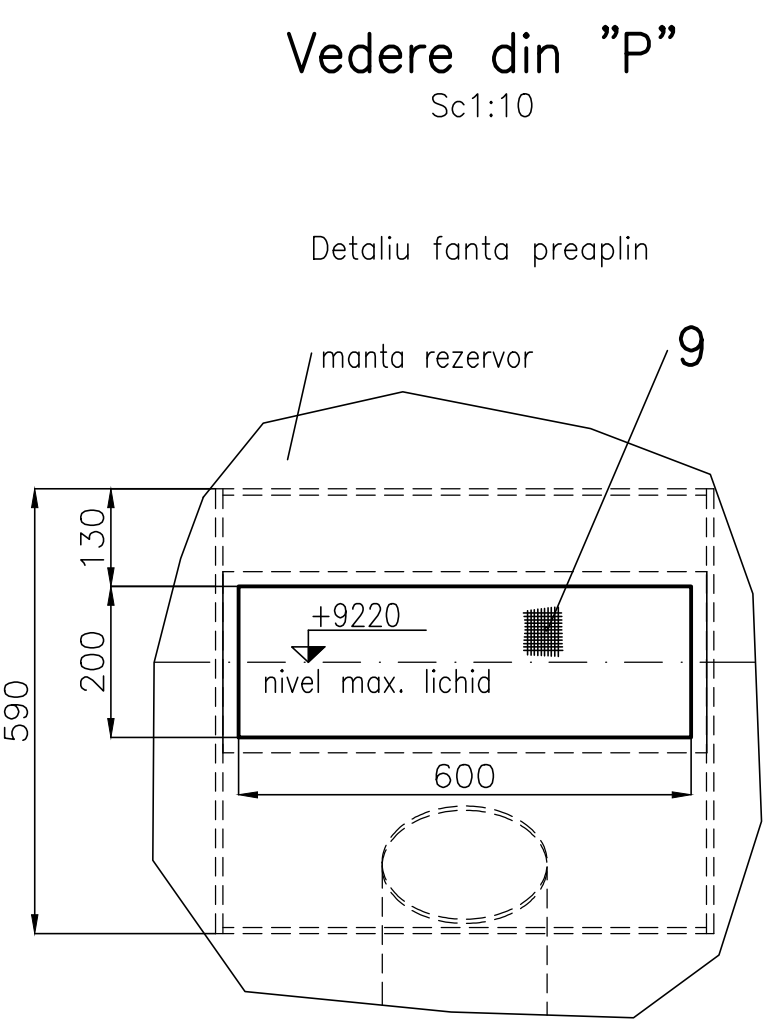
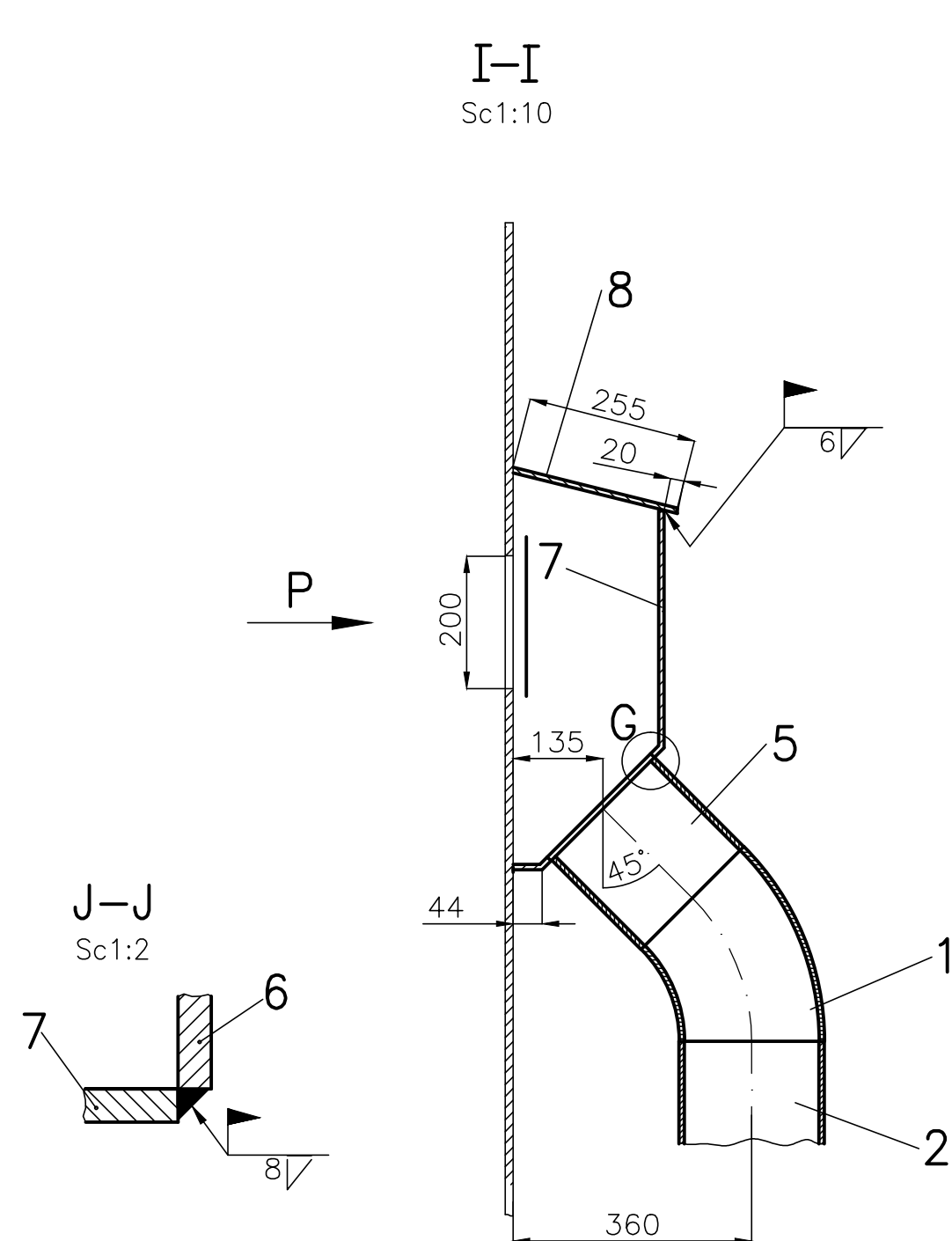
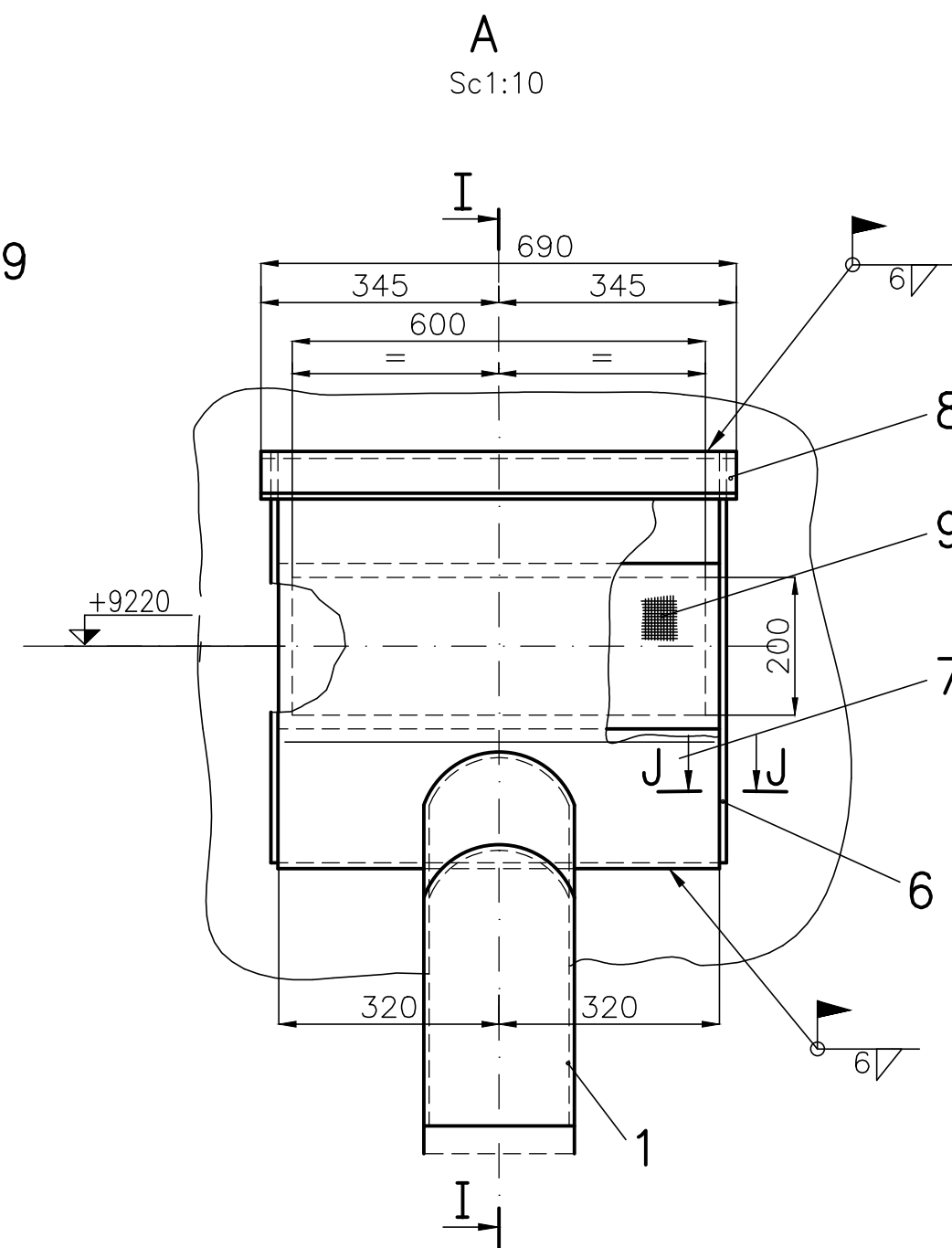
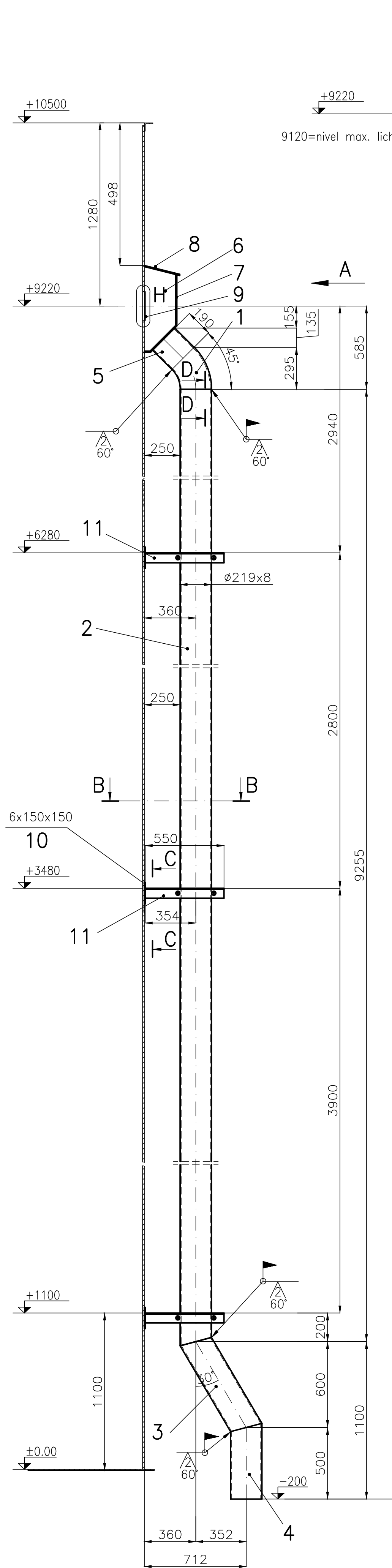


ACEST DOCUMENT ESTE PROPRIETATEA SOCIETATII ELIUS'92 S.R.L.-PUSTIENI IN CONSECINTA, PRIMA ARE DREPTUL  
EXCLUSIV DE FOLOSIRE A DESENULUI SAU DE OBTINERE A CREATIVITATII ADOPSIOR UN CARTEL AESTUIA.



NOTA  
SE VOR EXECUTA 2 BUCATI

14	Piulita M12	STAS 4071-89	12	Gr8	Cadmiat	0.014
13	Saiba	STAS 5200/4-91	6	S235J2	Cadmiat	0.004
12	Brida		3	S235J2		0.4
11	Consola		3	S235J2		4.1
10	Placa		3	S235J2	6x150x150	1.1
9	Plasa sarma Ø4-20/20	STAS 1077-67	1	10TiNiCr180	640x240	1.8
8	Capac		1	S235J2		11.3
7	Placa		1	S235J2		26.3
6	Placa		2	S235J2		7.7
5	Stut		1	S235J2	Ø219x8-190	7.9
4	Teava		1	S235J2	Ø219x8-530	22.0
3	Teava		1	S235J2	Ø219x8-755	31.3
2	Teava		1	S235J2	Ø219x8-9255	385
1	Cot45" R1.5 DN200	STAS 8804/3-92	1	S235J2	Ø219x8	10.2
	Electrozi	SREN 499: 1997		E44 2B		20.4
Poz.	DENUMIREA	Nr.DESEN sau STAS	BUC.	MATERIAL	OBSERVATII	Masa kg/buc
Rev.	Descriere	Data	Semnat	Rev.	Descriere	Data
Acest document este proprietatea S.C. ELLIS'92 S.R.L. si nu va fi comunicat fara autorizare						
Intocmit	Verificat	Aprobat	Beneficiar		Denumire proiect	
S.B.	N.R.	A.I.	CONPET SA		CONSTRUCTIE REZERVORARE PENTRU TITEL (V=2500 mc) STATA DE POMPARE MORENI DAMBOVITA	
ELIUS'92		arhitectura proiectare inginerie consultanta tehnica		RACORD PREAPLIN		Nr.: A646U-11.00 Scara: (1:10;1:2;1:1) Index: A646U-BD Rev.0 Data: 05.2018 Plansa: 1/1
Material:		Masa: 550 kg				